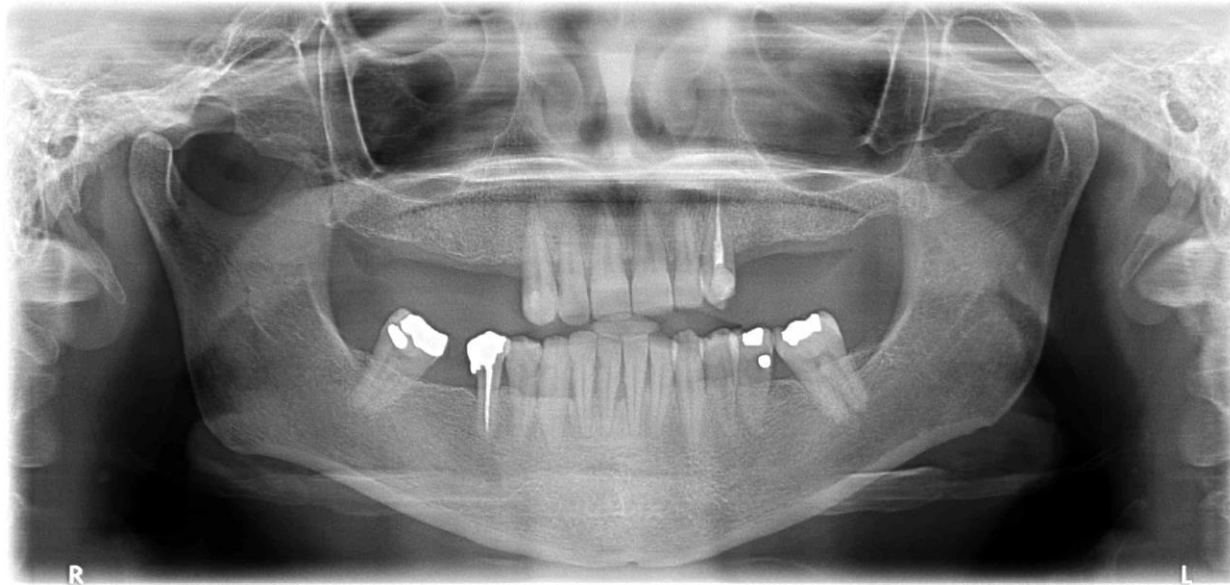
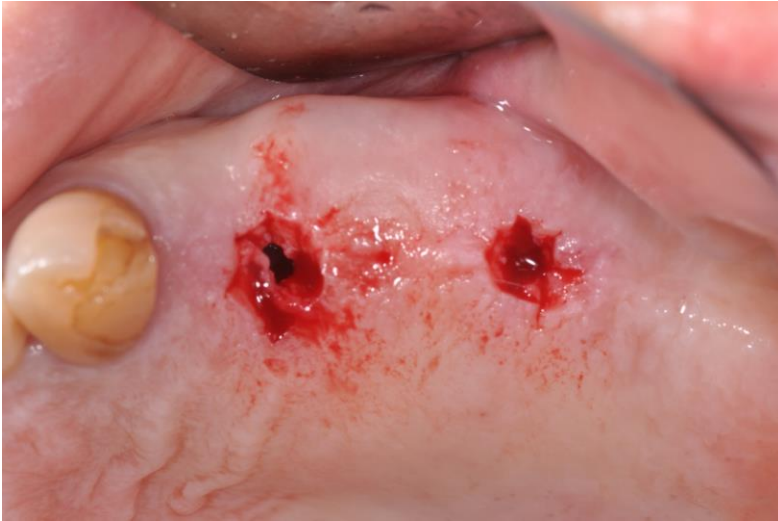




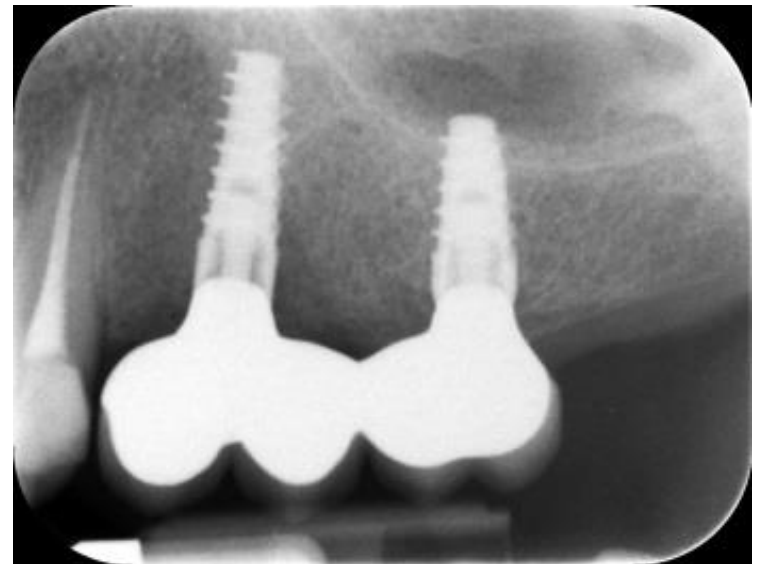
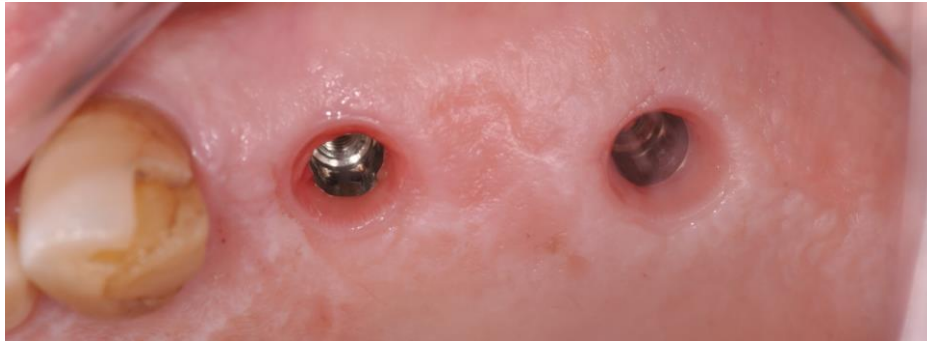
A 50 years old female patient came to the dental office asking for the rehabilitation of the left upper jaw. The patient had an excellent amount of vertical and horizontal bone but lack of vertical dimension available for the prosthesis.





In order to solve the vertical space problem, the surgeon decided to make a flapless insertion of two JDIcon® implants which are characterized by a conical internal connection (this allows to place the implant slightly below the bone crest) and a screw-retained prosthetic restoration.





After 4 months, a screw-retained implant-supported restoration was provided. Please note the minimum bone resorption around implants.